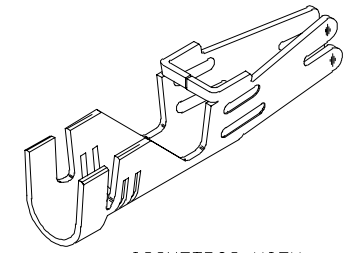
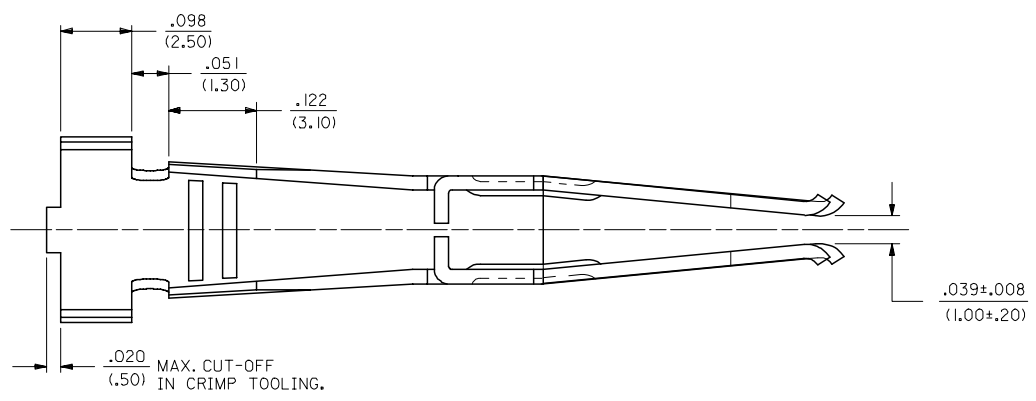
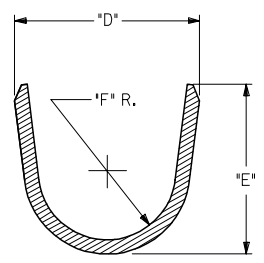
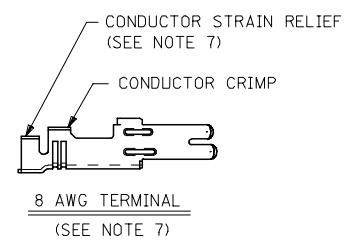
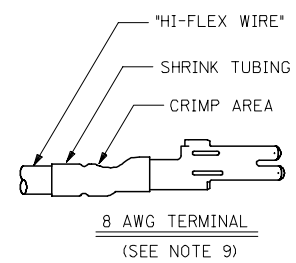
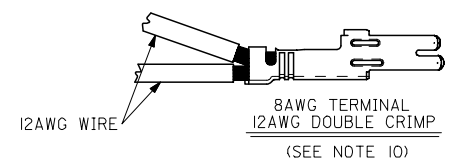
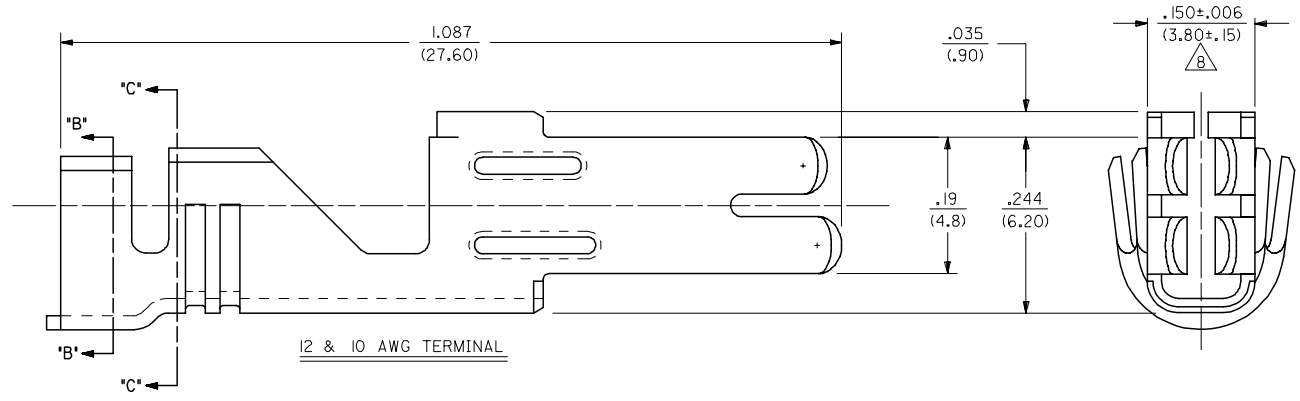


13 12 11 10 9 8 7 6 5 4 3 2 1

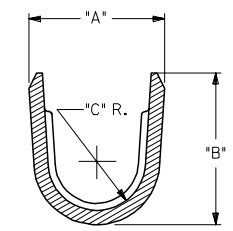
J
I
H
G
F
E
D
C
B
A



ISOMETRIC VIEW
(SCALE 4:1)



SECTION B-B



SECTION C-C
(BACKGROUND OMITTED)

| | | | | | | |
|---|---|--|--|--|---|--|
| REDRAWN IN ME10 EC NO: UCP2005-2769 DRAWN: JCOMERC 2005/06/17 CHKD: 2005/06/17 APPR: JCOMERC 2005/06/17 H1 | QUALITY SYMBOLS ▽=0 ▽=0 | GENERAL TOLERANCES (UNLESS SPECIFIED) mm INCH 4 PLACES ± --- ± --- 3 PLACES ± --- ± .010 2 PLACES ± 0.25 ± .016 1 PLACE ± 0.40 ± --- ANGULAR ±1/2° | DIMENSION STYLE IN/MM DRAWN BY DATE R/JF 1/6/92 CHECKED BY DATE R/JF 1/6/92 APPROVED BY DATE RAS 1/6/92 | SCALE 8:1 DESIGN UNITS METRIC THIRD ANGLE PROJECTION | TITLE FEMALE CRIMP TERMINAL, 12, 10 & 8AWG MINIFIT SR. | |
| | MATERIAL NO. SEE CHART | DOCUMENT NO. SD-42815-* | SHEET NO. 1 OF 2 | MOLEX INCORPORATED | | |
| | DRAFT WHERE APPLICABLE MUST REMAIN WITHIN DIMENSIONS | | | | | |
| | THIS DRAWING CONTAINS INFORMATION THAT IS PROPRIETARY TO MOLEX INCORPORATED AND SHOULD NOT BE USED WITHOUT WRITTEN PERMISSION | | | | | |

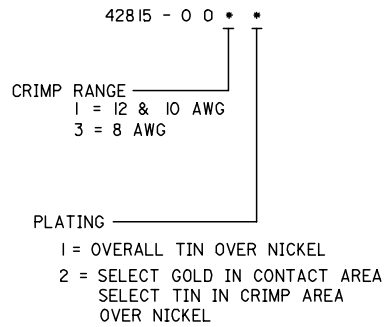
12 11 10 9 8 7 6 5 4 3 2 1

| ITEM NUMBER | WIRE RANGE | DIM. A | DIM. B | DIM. C | DIM. D | DIM. E | DIM. F | MAX. INSULATION DIAMETER | PLATING |
|-------------|-------------|-------------------------|-------------------------|-------------------|-------------------------|-------------------------|-------------------|--------------------------|-------------|
| 42815-0011 | 12 & 10 AWG | .213±.024 (5.40±.60) | .240±.016 (6.10±.40) | .067 R. (1.70) | .232±.024 (5.90±.60) | .260±.016 (6.60±.40) | .087 R. (2.20) | .209 DIA. (5.30) | OVERALL TIN |
| 42815-0031 | 8 AWG | .229±.024 (5.83±.60) | .292±.016 (7.42±.40) | .067 R. (1.70) | .236±.024 (6.00±.60) | .216±.016 (5.50±.40) | .087 R. (2.20) | .260 DIA. (6.60) | |
| 42815-0012 | 12 & 10 AWG | .213±.024 (5.40±.60) | .240±.016 (6.10±.40) | .067 R. (1.70) | .232±.024 (5.90±.60) | .260±.016 (6.60±.40) | .087 R. (2.20) | .209 DIA. (5.30) | SELECT GOLD |
| 42815-0032 | 8 AWG | .229±.024 (5.83±.60) | .292±.016 (7.42±.40) | .067 R. (1.70) | .236±.024 (6.00±.60) | .216±.016 (5.50±.40) | .087 R. (2.20) | .260 DIA. (6.60) | |

NOTES:

- 1) MATERIAL: COPPER ALLOY 151, .020/(.50) THICK.
- 2) PLATING:
 - 1 = .000100/(.00254) MIN. *TIN OVER
.000050/(.00127) MIN. NICKEL.
 - 2 = .000030/(.00076) MIN. SELECT GOLD IN CONTACT AREA.
.000100/(.00254) MIN. SELECT *TIN ON SOLDER TAILS
OVER .000050/(.00127) MIN. NICKEL.
- * THE PRIMARY SHIPPING CARTON WILL BE LABELED
COMPLIANT TO RoHS DIRECTIVE 2002/95/EC
AND ELV ANNEX II OF DIRECTIVE 2000/53/EC.
CARTONS WITHOUT THIS LABEL MAY CONTAIN
PRODUCT WITH TIN-LEAD.
- 3) PRODUCT SPEC.: PS-42815-001
- 4) PART IS DESIGNED IN METRIC.
- 5) TERMINALS FOR USE WITH STRANDED WIRE ONLY.
- 6) ITEM NUMBERS PRECEDED BY AN 'X' IN THE CHART ARE NOT AVAILABLE.
- 7) THE 8 AWG TERMINAL HAS NO INSULATION CRIMP. THE SECONDARY CRIMP SECTION
ACTS AS A STRAIN RELIEF ON THE BARE CONDUCTOR ONLY. SEE MOLEX CRIMP
SPECIFICATION FOR DETAILS.
- 8) AFTER CRIMPING, THIS DIMENSION IS .140/(3.55) MINIMUM.
- 9) WHEN USING THE 8 AWG TERMINAL WITH "SUPERFLEX WIRE",
MOLEX STRONGLY RECOMMENDS THAT THE APPROPRIATELY
RATED HEAT SHRINK INSULATION BE APPLIED OVER THE WIRE
INSULATION AND CRIMP AREA, AS SHOWN, TO MINIMIZE WIRE
INSULATION CREEPAGE OUTSIDE OF HOUSING.
- 10) THE 8AWG TERMINAL WILL ALSO ACCOMODATE 2 I2AWG WIRES
SEE CRIMP SPEC FOR DETAILS.
- 11) CRIMP SPECS.:
638210000 FOR 10AWG & 12AWG
638300000 FOR 8AWG, 8AWG HI-FLEX & DOUBLE 12AWG

LEGEND:



| | | | | | | | | | | | |
|--|--|-------------------------------|--|-----------------------|---------------------------|----------------------|----------------------------|------------------------|------------------------|----------------|---|
| SEE SHEET 1 EC NO: UCP2005-2769 DRAWN: JCOMERC CHKD: JCOMERC APPR: JCOMERC H1 | 2005/06/17 2005/06/17 2005/06/17 | QUALITY SYMBOLS ▽=0 ▽=0 | GENERAL TOLERANCES (UNLESS SPECIFIED) | | DIMENSION STYLE IN/MM | | SCALE 8:1 | DESIGN UNITS METRIC | THIRD ANGLE PROJECTION | | |
| | | | 4 PLACES ± --- ± --- | 3 PLACES ± --- ± .010 | 2 PLACES ± 0.25 ± .016 | 1 PLACE ± 0.40 ± --- | mm | INCH | DRAWN BY RJF | DATE 1/6/92 | TITLE FEMALE CRIMP TERMINAL 10-12 AWG & 8 AWG MINIFIT SR. SERIES |
| | | | ANGULAR ±1/2° | | DRAWN BY RJF | | CHECKED BY RJF | | DATE 1/6/92 | | MOLEX INCORPORATED |
| | | | DRAFT WHERE APPLICABLE MUST REMAIN WITHIN DIMENSIONS | | MATERIAL NO. SEE CHART | | DOCUMENT NO. SD-42815-* | | SHEET NO. 2 OF 2 | | |